



Agilent 2200 TapeStation System

# ACCELERATE YOUR SAMPLE QC WITH CONFIDENCE

The Measure of Confidence



**Agilent Technologies**

## ACCELERATE YOUR SAMPLE QC

**Confidence means a QC workflow that delivers reproducible, user-independent results – when you need them**

Developed by the company behind the industry-leading 2100 Bioanalyzer, the new Agilent 2200 TapeStation system offers scalable throughput and rapid results, making it an ideal solution for quality control of biological samples in next-generation sequencing (NGS), microarray and qPCR workflows, as well as in protein purification and antibody production.

The 2200 TapeStation system uses credit card-sized, disposable Agilent ScreenTape that is available for DNA, RNA and protein applications. Sample analysis has never been so easy – simply load the 2200 TapeStation instrument with ScreenTape, loading tips, and your samples in 16 tubes or 96-well microtiter plates – and you will be reviewing results in approximately 1 minute per sample!



Combined with prepackaged ScreenTape and intuitive software, the Agilent 2200 TapeStation system provides an automated, scalable solution for the electrophoretic analysis of DNA, RNA and proteins.

## The Agilent 2200 TapeStation system makes sample QC as easy as 1–2–3!



### Benefit from the scalability, speed and simplicity of the Agilent 2200 TapeStation system:

#### Scalable throughput

Individual channels facilitate variable throughput at a constant cost per sample.

#### Fast results

Obtain results in approximately one minute per sample, even for 96 samples.

#### Easy to use

Simplify your workflow with ready-to-use ScreenTape consumables.

#### Excellent reproducibility

Achieve user-independent results through minimal manual intervention and pre-packaged reagents.

#### Low sample need

Use no more than 2  $\mu$ L of your precious samples per run – even for high sensitivity analysis.

#### Highest flexibility

Switch with ease between DNA, RNA and Protein ScreenTape for greater flexibility.

#### Absolute robustness

The system does not contain fragile or other error-prone features and procedures.

#### Gold standard for RNA QC

Rely on the market-leading RNA quality standard (RIN) by using the Agilent-developed RIN<sup>e</sup>.

#### Zero carryover

In addition to individual loading tips for each sample, the ScreenTape analyses each sample in a separate lane.

#### Protect sample performance

Avoid sample evaporation by covering your 96-well microtiter plates with a foil seal.

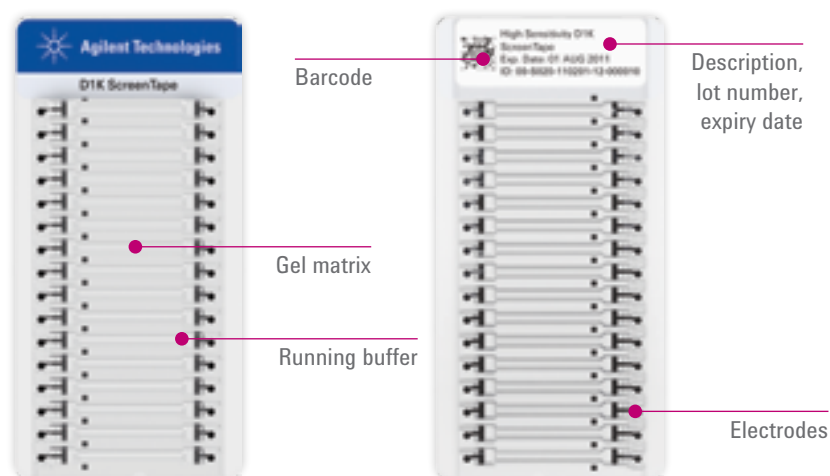
#### Small footprint

Save valuable benchspace in your lab as there is no need for gel tanks, buffer bottles or documentation systems.

## SAMPLE QC OF DNA, RNA AND PROTEINS




### A portfolio of ScreenTape for a range of applications

The credit card-sized, disposable ScreenTape carries multiple separation lanes for separating DNA, RNA and protein samples. Each ScreenTape has 16 lanes so that each sample is analyzed in an individual lane. Partially used ScreenTape can be used for analysis at a later point in time.



The credit card-sized ScreenTape carries 16 lanes for analysis of DNA, RNA or protein samples.

### Typical ScreenTape applications

RNA ScreenTape	DNA ScreenTape	Protein ScreenTape
<ul style="list-style-type: none"> <li>• Gene expression profiling</li> <li>• RNA QC in multiple workflows such as microarrays, next generation sequencing, quantitative RT-PCR</li> </ul> 	<ul style="list-style-type: none"> <li>• Sample QC in NGS workflow</li> <li>• QC of cDNA libraries</li> <li>• Genotyping</li> <li>• Multiplex PCR fragment analysis</li> <li>• Mycoplasma detection</li> <li>• QC of quantitative PCR products</li> <li>• Veterinary diagnostics</li> </ul> 	<ul style="list-style-type: none"> <li>• Antibody stability testing and QC</li> <li>• At-line monitoring of protein expression</li> <li>• Protein purification optimization and monitoring</li> <li>• Purification of recombinant proteins, including control of purification tag removal</li> <li>• QC before MS/crystallography</li> </ul> 

Select from the ScreenTape portfolio for DNA, RNA or protein analysis based on your application and sensitivity requirements.

## AUTOMATED SAMPLE LOADING AND ANALYSIS

### A complete solution for your sample QC

Agilent provides a complete solution for your QC workflow. Choose from two instrument configurations – DNA, RNA and protein analysis or DNA and RNA analysis only. Each configuration includes:

- **Agilent 2200 TapeStation**
  - DNA, RNA and protein analysis
  - DNA and RNA analysis only
- **Accessories**  
Sample blocks for tube strips or 96-well microtiter plates, tip holders, power supply, USB cable
- **Laptop**  
Pre-installed Agilent 2200 TapeStation software
- **Consumables**  
96-well microtiter plates, tube strips, loading tips, foil seals
- **User information**  
Quick Guides and User Guide CD



#### Easy to use

The integrated barcode scanner automatically identifies which ScreenTape you have loaded, facilitating transfer of tape-specific parameters to the 2200 TapeStation software without any manual intervention. Both sample and ladder are loaded automatically.

#### Excellent reproducibility

The tape holder aligns the ScreenTape with the built-in electrodes and imaging system.

#### Scalable throughput

The 2200 TapeStation instrument distinguishes automatically between tube strips and 96-well microtiter plates.

#### Zero carryover

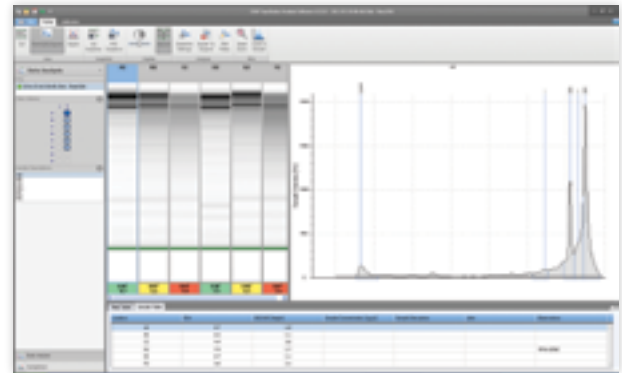
The liquid handler uses a fresh pipette filtered tip to load each individual sample onto the ScreenTape, eliminating contamination and carryover.

## STREAMLINED DATA ANALYSIS AND REPORTING

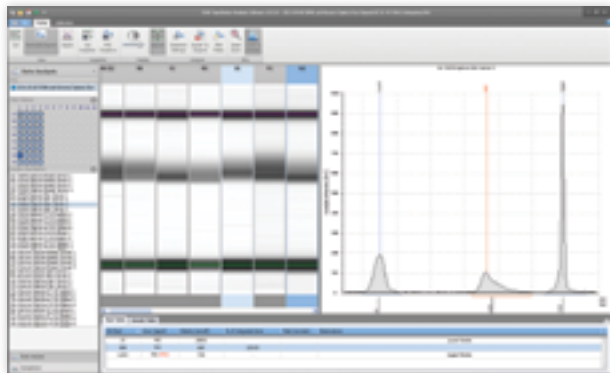
**The 2200 TapeStation software is simple and intuitive, streamlining your data analysis and reporting, and making sample QC quick and easy**

You can display your results as an electropherogram, as a familiar gel image or in tabular format for effortless sample comparison. Depending on your application, the software automatically determines size, quantity, purity, RIN<sup>e</sup> or ribosomal ratios, saving you time and reducing errors. Reports can easily be generated and saved in PDF format or edited in Word and Excel.

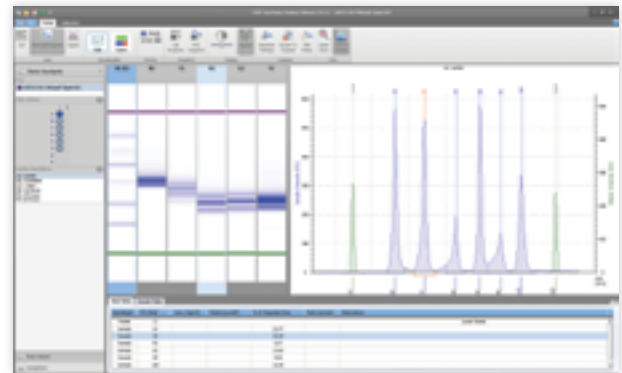
### RNA application



### DNA application



### Protein application



## INSTRUMENT AND APPLICATION SUPPORT

**Agilent is well known for its outstanding level of customer service and support.**

Choose from a variety of different service options to suit your service level needs.

### Hardware and software support services

All system components carry a one-year factory warranty. The 2200 TapeStation is covered by the premium repair service of either 24-hour instrument express exchange or return for repair with loan instrument. This significantly reduces the instrument downtime. The premium warranty service can be extended in the following ways to ensure maximum uptime.

- One-year or two-year warranty extensions for all major system components including, laptop, software and express exchange for the 2200 TapeStation. In addition, this warranty extension provides an annual system preventive maintenance service.
- Up to 5 years express exchange warranty extension for the 2200 TapeStation, with the option of including the laptop.

### Application support services

On-site application-related start-up services are available to familiarize the new user with the hardware, software and an application of choice.

*“The system is easy to set up with negligible sample preparation and an intuitive software interface allowing us to quickly process large numbers of (in our case) RNA samples for downstream processes.”*

- **DR ANDREW J. CASSIDY**, GENETICS CORE SERVICES MANAGER, NINEWELLS HOSPITAL AND MEDICAL SCHOOL, DUNDEE, UK

## **For more information**

Learn more:

**[www.agilent.com/genomics/tapestation](http://www.agilent.com/genomics/tapestation)**

Buy online:

**[www.agilent.com/chem/store](http://www.agilent.com/chem/store)**

Find an Agilent customer center in your country:

**[www.agilent.com/chem/contactus](http://www.agilent.com/chem/contactus)**

U.S. and Canada

**1-800-227-9770**

**[agilent\\_inquiries@agilent.com](mailto:agilent_inquiries@agilent.com)**

Europe

**[info\\_agilent@agilent.com](mailto:info_agilent@agilent.com)**

Asia Pacific

**[inquiry\\_lsca@agilent.com](mailto:inquiry_lsca@agilent.com)**

This information is subject to change without notice.

© Agilent Technologies, Inc. 2011

Published in the USA, November 1, 2011

5990-9162EN



**Agilent Technologies**